



PORT OF PRINCE RUPERT

Shipping Trends and Future Activity on BC North Coast

AGENDA

Who We Are

Facilities Overview

Vessel Traffic

Building the Gateway – Ridley Island Development Plans

Sustainability

WHO WE ARE

Our Mandate - Letters Patent

- Commercially viable
- Autonomous and governed by a Board of Directors
- Steward of Crown's Assets:

Total Land Holdings	965.60 ha
Owned Harbour	14,000 ha
Navigable waters footprint	>350 km of coastline

Our Mission

- Facilitating and expanding the movement of cargo and passengers
- Overall planning, development, marketing and management of the commercial port facilities.

Our Vision

To be a leading trade corridor 'gateway' between North American and Asian markets.

AGENDA

Who We Are

Facilities Overview

Vessel Traffic

Building the Gateway – Ridley Island Development Plans

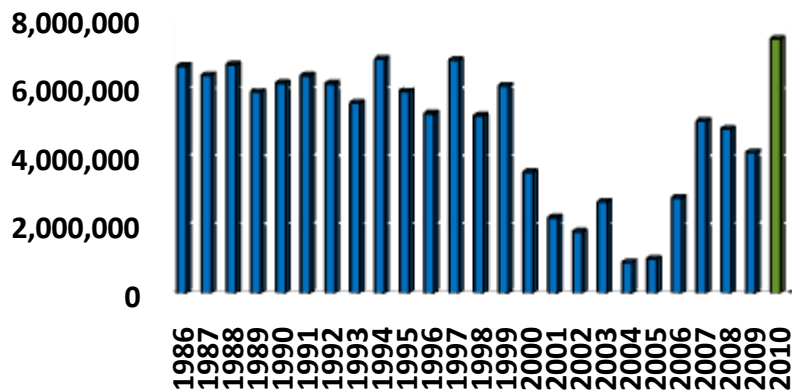
Sustainability



Ridley Terminals Inc.



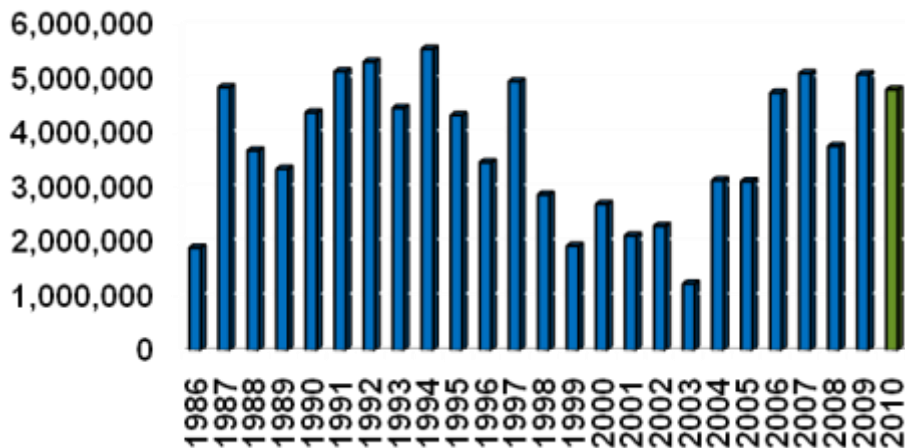
- Automated 100 acre terminal
- Unloads trains @ 6,000 tonnes/hr
- Loads ships @ 9,000 tonnes/hour
- 12 million tonne annual shipping capacity
- 1.2 million tonne storage capacity
- Handling coal, pet. coke & wood pellets



Prince Rupert Grain Ltd.



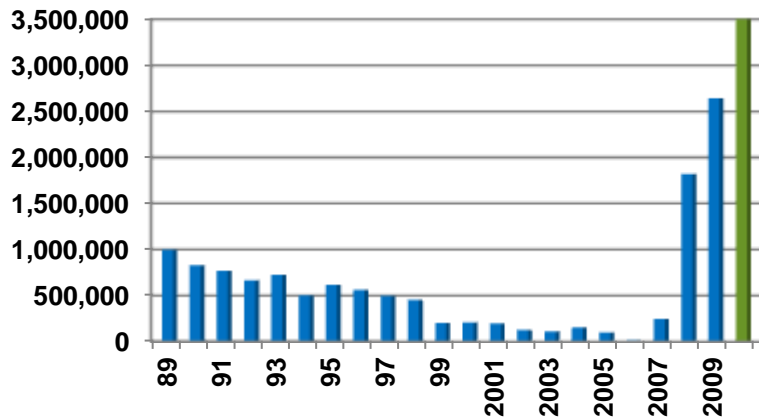
- Modern high-throughput facility
- 7 million tonne annual capacity
- 4,000 tonne/hr loading rate
- 202,000 tonne storage capacity
- Berth ships to 145,000 DWT
- Grain clean capabilities



Fairview Container Terminal – Phase 1

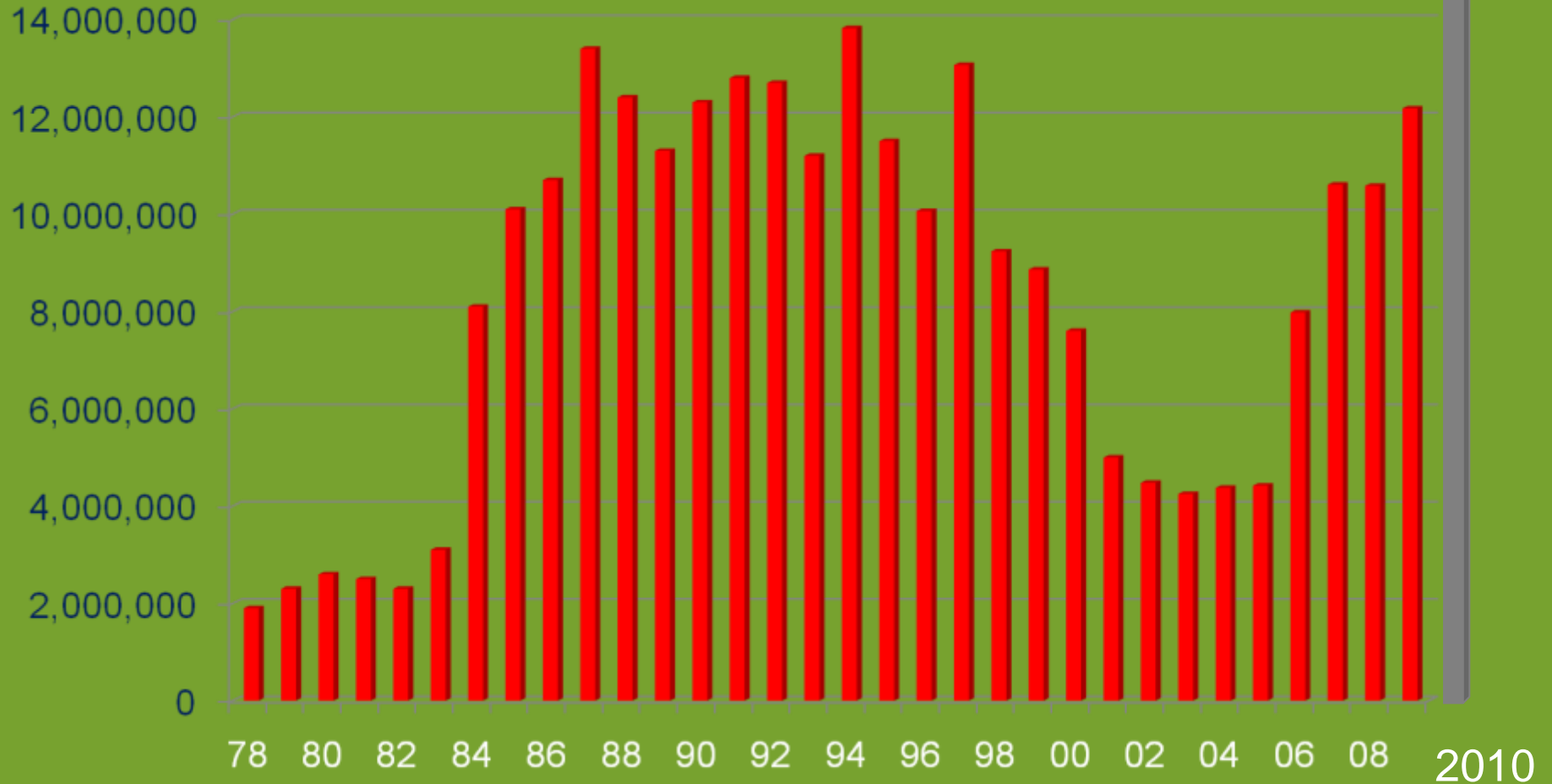


- > 98% marine-to-rail intermodal
- Design capacity: 500,000 TEUs
- 360 meter container quay
- 17.0 meter berth depth (low tide)
- 3 Ultra Post Panamax Cranes
- Container Yard capacity @ 4 high = 9,430 TEUs
- Reefer stacks with 72 plugs
- 7 working tracks (5,500m), 6 storage tracks (6,100m)
- 4 Radiation Scanning Portals; on-site VACCIS screening



TOTAL PORT-WIDE TRAFFIC (MT)

16,531,000



AGENDA

Who We Are

Facilities Overview

Vessel Traffic

Building the Gateway – Ridley Island Development Plans

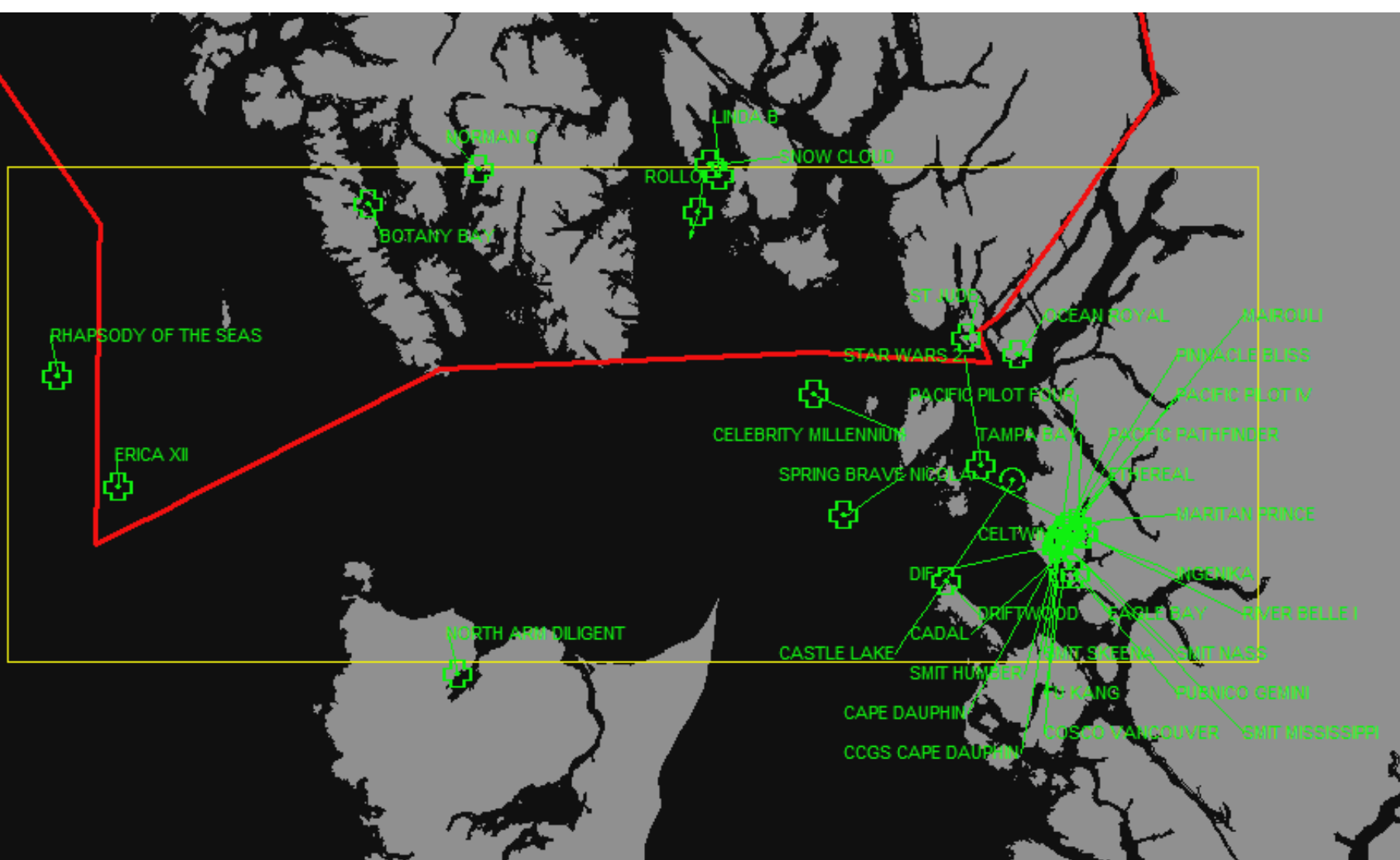
Sustainability

YEARLY VESSEL TRAFFIC FOR NORTH COAST PORTS

YEAR	PRINCE RUPERT	KITIMAT	STEWART	TOTAL
2009	311	72	8	391
2010	380	47	8	435
2011	406	67	12	485

2010 VESSEL TYPE BREAKDOWN

Bulk Carriers - 50.8%	Cruise Ships - 6%
Container Ships - 24.4%	Tugs/Barges - 6%
Tankers - 6.5%	General Cargo - 6%



Dixon Entrance Vessel Traffic

Average vessel traffic 30 Jul - 4 Aug 11 was 39/day (Daily Range 30 to 52 vessels)

AGENDA

Who We Are

Facilities Overview

Vessel Traffic

Building the Gateway –Development Plans

Sustainability



Ridley Island Development Plan



Gateway 20/20 Vision

AGENDA

Who We Are

Strategic Advantages

Facilities Overview

Building the Gateway –Development Plans

Sustainability

Growth of Port of Prince Rupert

- Balance unprecedented demand with conscientious growth
 - Safe
 - Responsible
 - Sustainable
- Respect for the environment
- Leaders in environmental stewardship and community partnerships
- Gauge and mitigate impact of new construction and expanded operations

Sustainability Plan

- Green Marine Program
- Shore power at container port
- Planned Road/Rail Utility Corridor
- Environmental Footprint and Stewardship Plan
 - Baseline Study
 - » Water quality
 - » Air quality and air shed model
 - » Contaminated sites inventory
 - » Noise study

www.rupertport.com



PORT OF PRINCE RUPERT

Welcome to Canada's Leading Edge